


Jehovah's Witnesses Explained



What's really inside
the briefcase?
Exploring the beliefs
and rules that set
them apart.



We've all seen them at the door



Neatly dressed, always working in pairs.



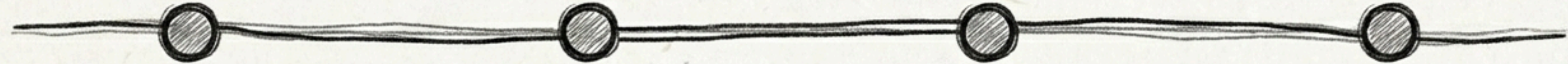
Carrying briefcases and literature.



But what does life look like **inside** their world?

To understand the Jehovah's Witness experience, we must look beyond the neighborhood ministry and examine their origins, **rigid theology**, and strict social structure.

A Prophecy Born in Pennsylvania




1870s: Pittsburgh.
Charles T. Russell
starts a Bible study,
rejecting traditional
Hellfire and the Trinity.

1874: The movement
declares Jesus has
returned invisibly.

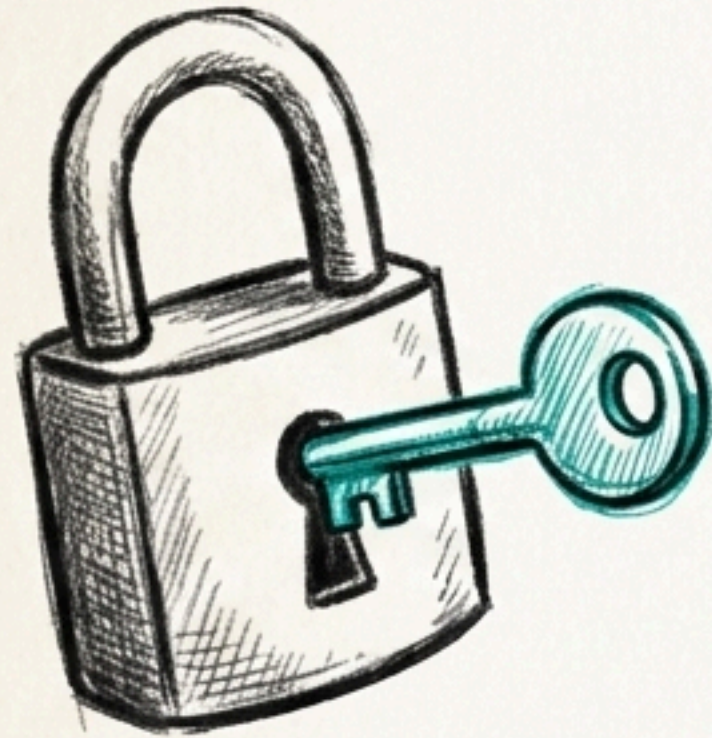
1914: WWI begins.
Followers view this
global chaos as divine
proof that Christ's
invisible kingdom
has commenced.

1916 - 1931: Joseph
Rutherford takes over,
centralizing power. In
1931, the group is
officially named
Jehovah's Witnesses.

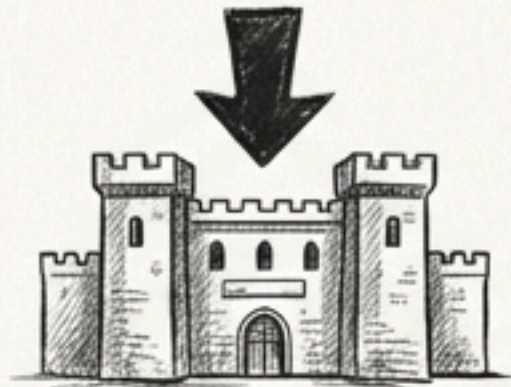
A Completely Different Theological Framework

	Mainstream Christianity	Jehovah's Witnesses
God	The Trinity (Father, Son, Holy Spirit).	Jehovah alone. The Trinity is considered a false, pagan idea.
Jesus	God incarnate.	Michael the Archangel. God's first creation, later resurrected as a powerful spirit being, not human.
Holy Spirit	A Person / God.	God's Active Force. Compared to electricity or wind—an impersonal energy. 

Who Holds the Keys to Interpretation?



Jehovah God



The Governing Body: A small group in Warwick, NY. Viewed as the “Faithful & Discreet Slave”. Questioning them equals rebelling against God.

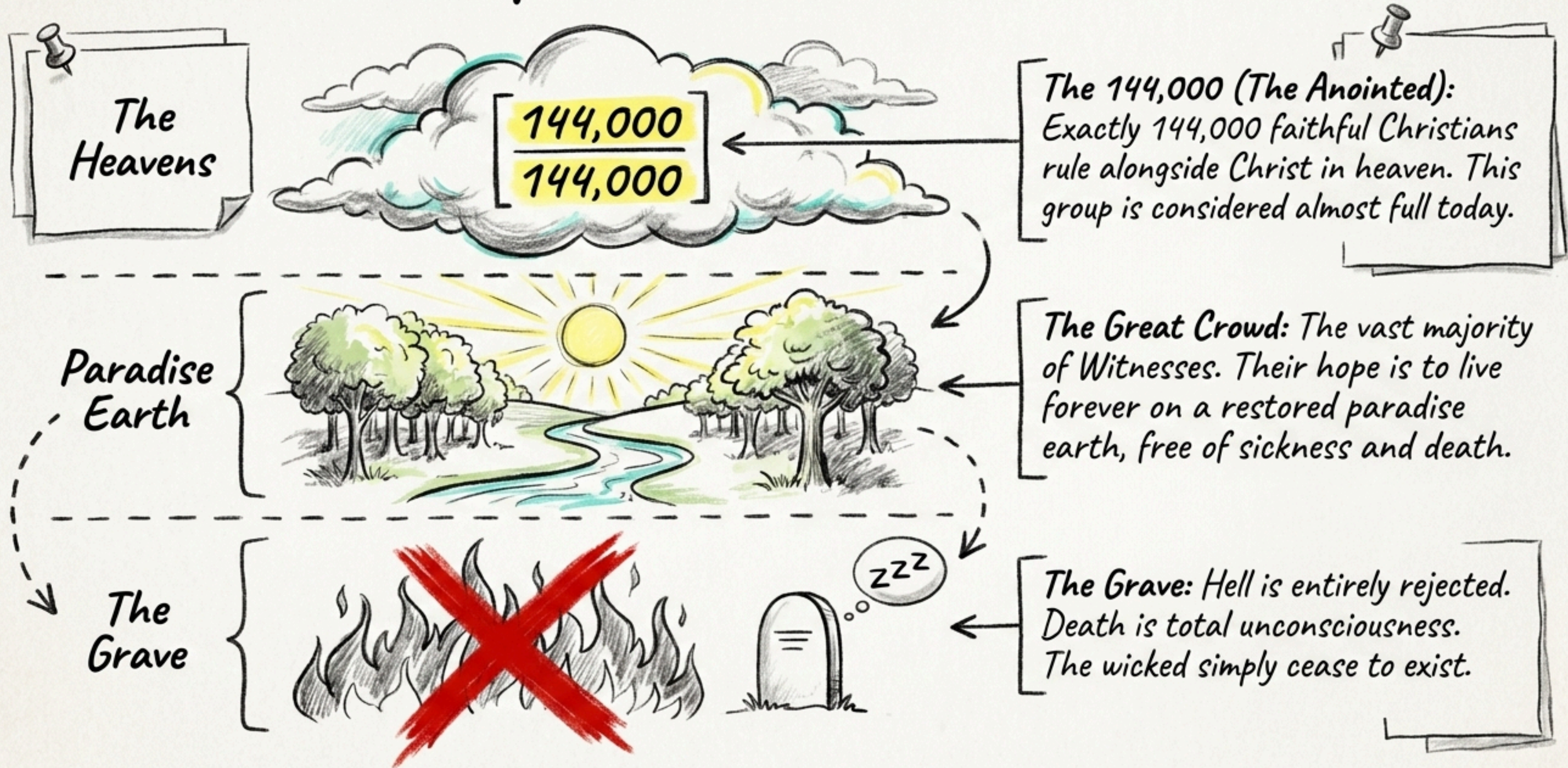


New World Translation (NWT): Their custom Bible. Scholars note verses (like John 1:1) are altered to fit Watchtower doctrine.



The Followers: Personal interpretation of scripture outside of Governing Body commentary is strictly forbidden.

A Two-Tiered Hope for the Future



The Urgency of the End Times

The Catalyst:

In 1914, Satan and his demons were cast down to earth, sparking today's era of wars, chaos, and disasters.



The Aftermath:

Christ will then reign for 1,000 years, restoring the earth to its original paradise state.

The Climax:

The world is living in its final days. Armageddon is imminent. God will soon destroy all wicked governments, religions, and unbelievers.



Knocking is Not Optional



Fulfilling Jesus' command to preach.



- Every baptized witness is expected to participate, often weekly.
- Hours spent preaching are meticulously tracked and reported to leadership.
- Members are trained in specific study techniques and structured follow-ups for interested homes.
- Participation is viewed as a core sign of loyalty to Jehovah.

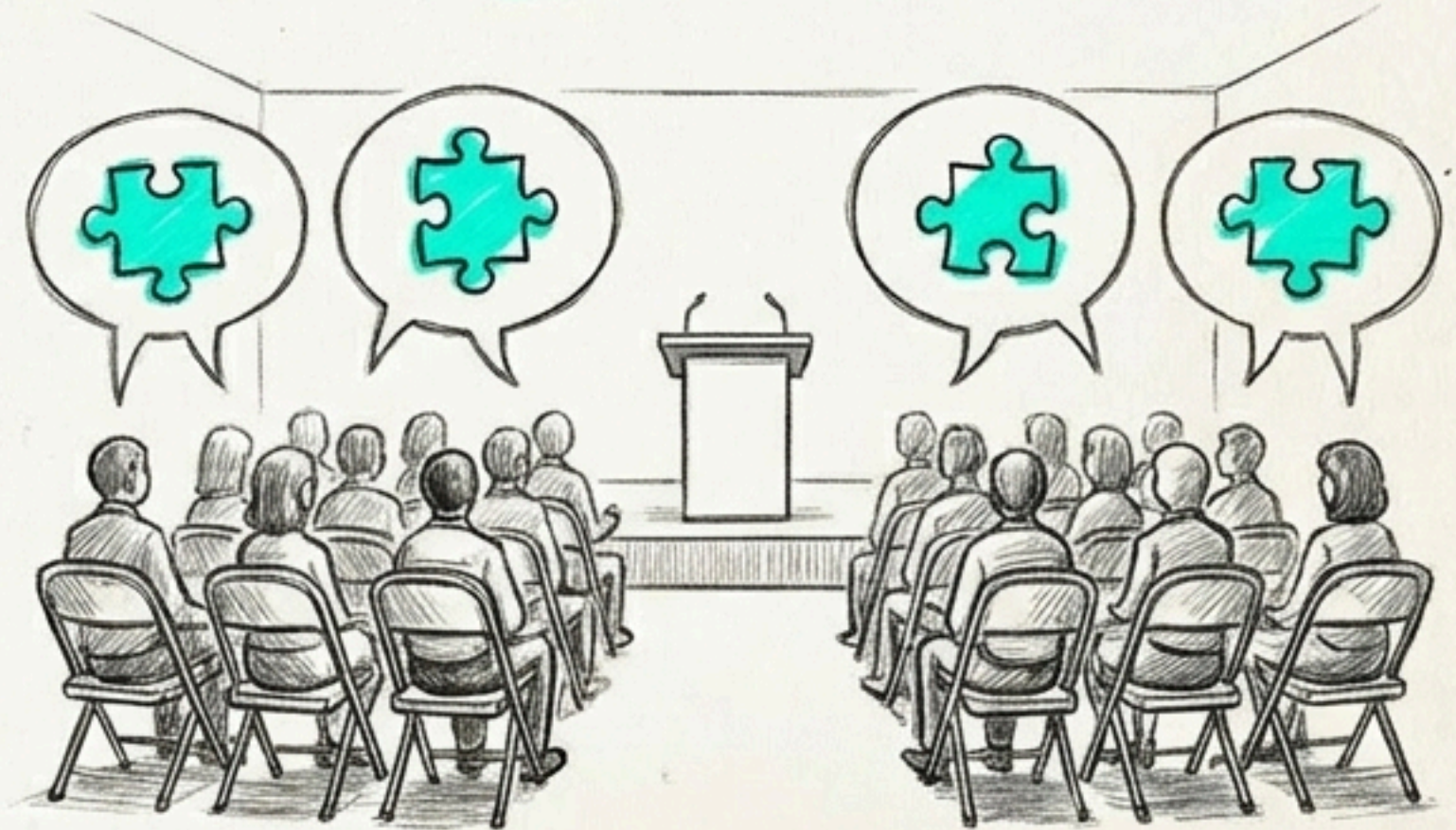
Structured and Scripted Worship

What it isn't:



No pastors, no choirs, and no spontaneous worship.

What it is:



Members gather several times a week for discussion-style meetings. Everything follows a strict Watchtower Society outline.

The Q&A sessions use provided questions and pre-determined "model answers." The goal is absolute unity in belief and conduct—essentially spiritual training sessions.

No Part of the World - The Wall of Separation



Politics: Strict neutrality. No voting, military service, or saluting flags (viewed as part of Satan's system).



Holidays: No Christmas, Easter, or Birthdays (rejected for pagan origins or glorifying humans).



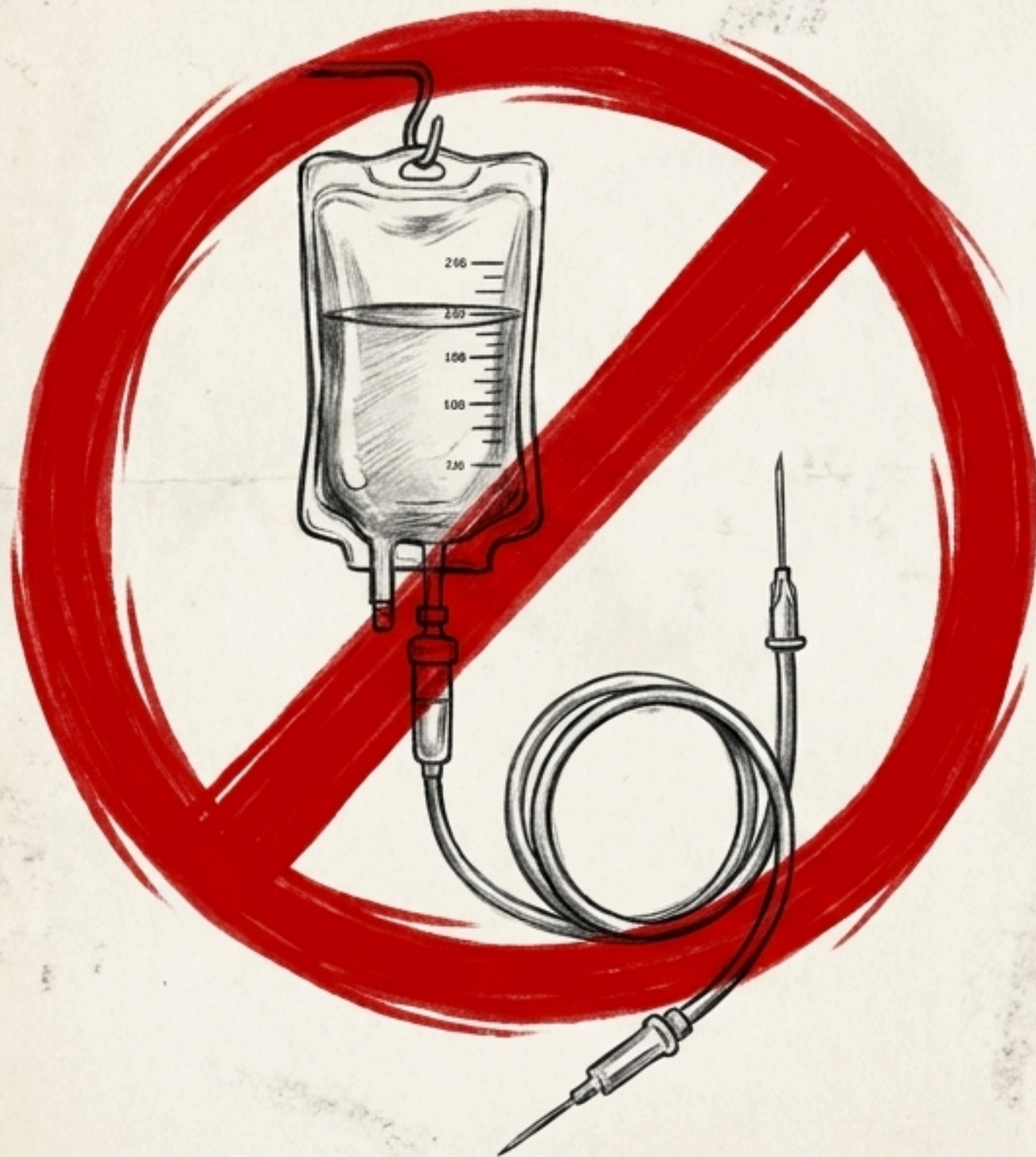
Education: Higher education is heavily discouraged for leading to worldly thinking.



Media & Association: Avoid worldly entertainment and non-Witness friends to guard the mind.



The Blood Doctrine: A Life or Death Rule



The Rule: Absolute refusal of whole blood transfusions, even in severe medical emergencies. This applies equally to children.

The Scriptural Basis: A strict interpretation of Acts 15:28-29, which commands believers to "abstain from blood." Accepting transfused blood is a grave sin.

The Exceptions: While whole blood is banned, the organization does allow certain "blood fractions" and non-blood alternative medical procedures.

Morality, Economics, and Daily Life

Marriage & Morality



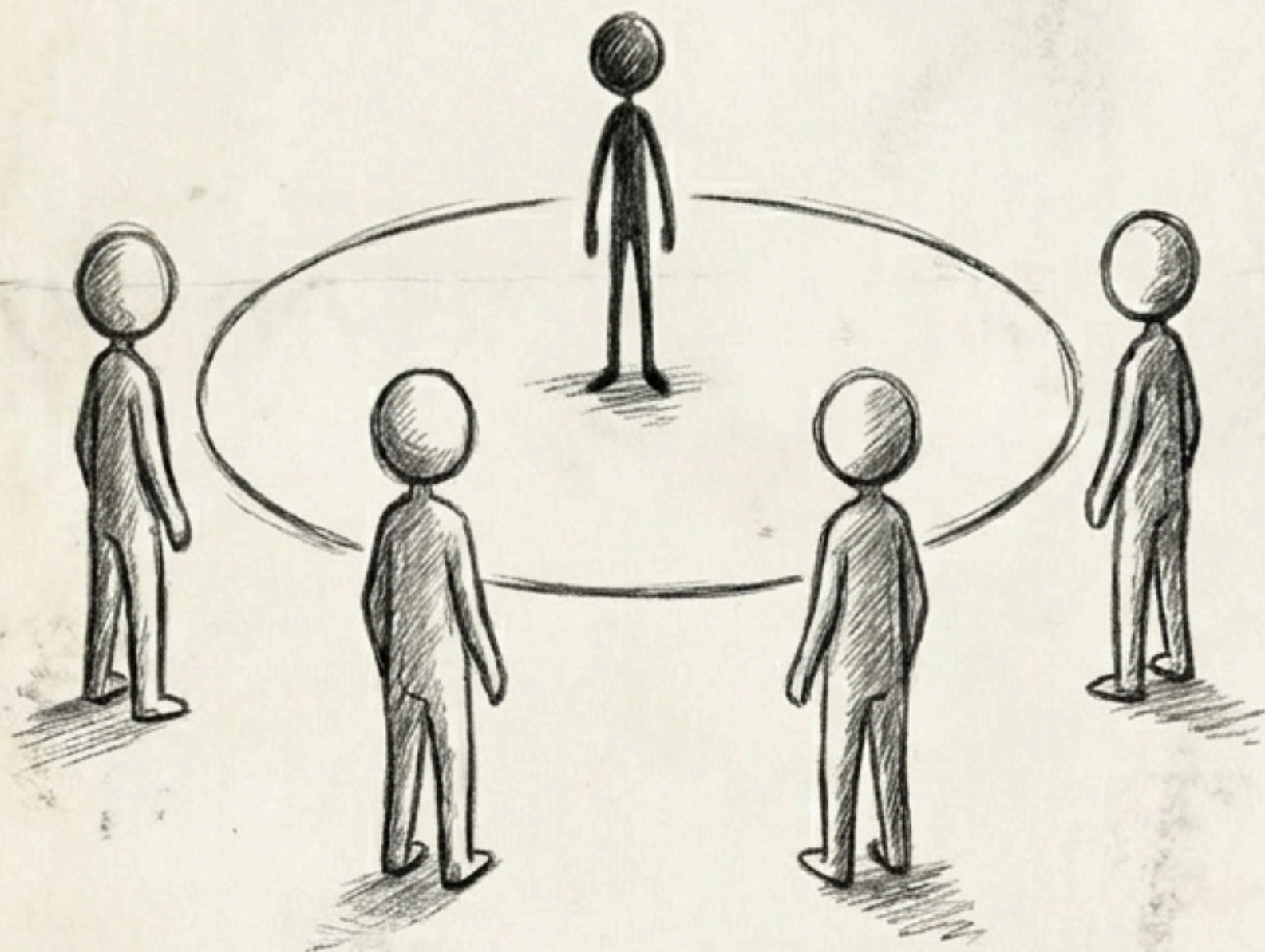
Strict traditional gender roles. Divorce is permitted only for adultery. Premarital sex guarantees expulsion. Marrying a non-witness is heavily discouraged or outright forbidden.

Work & Finances



Members are urged to take short-term trades or part-time work to maximize hours for the ministry. While there is no formal tithing, regular "voluntary" donations are expected to prove gratitude to Jehovah.

Disfellowshipping: The Threat of Spiritual Exile

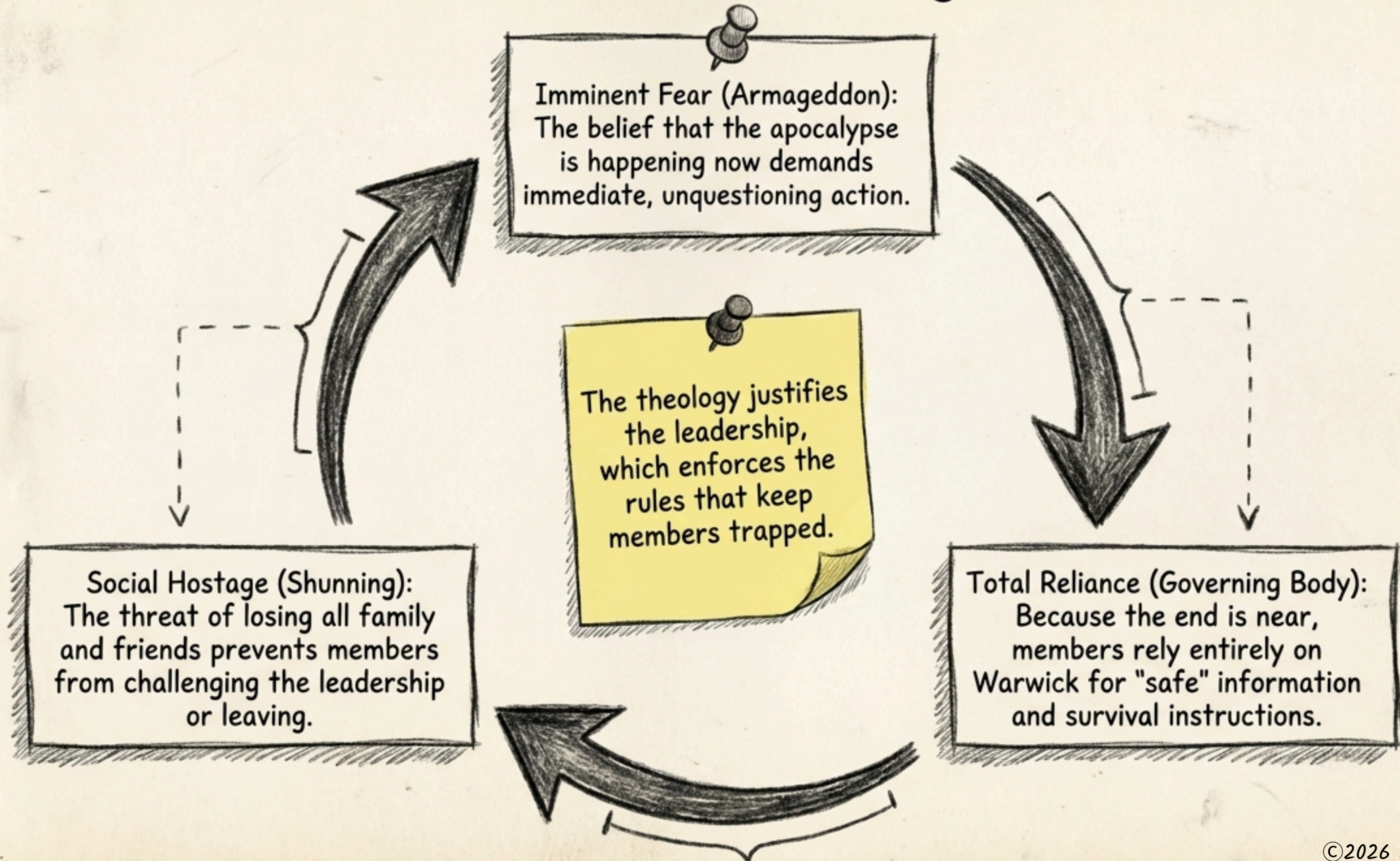


The Trigger: Committing a serious sin or questioning Watchtower doctrine results in expulsion.

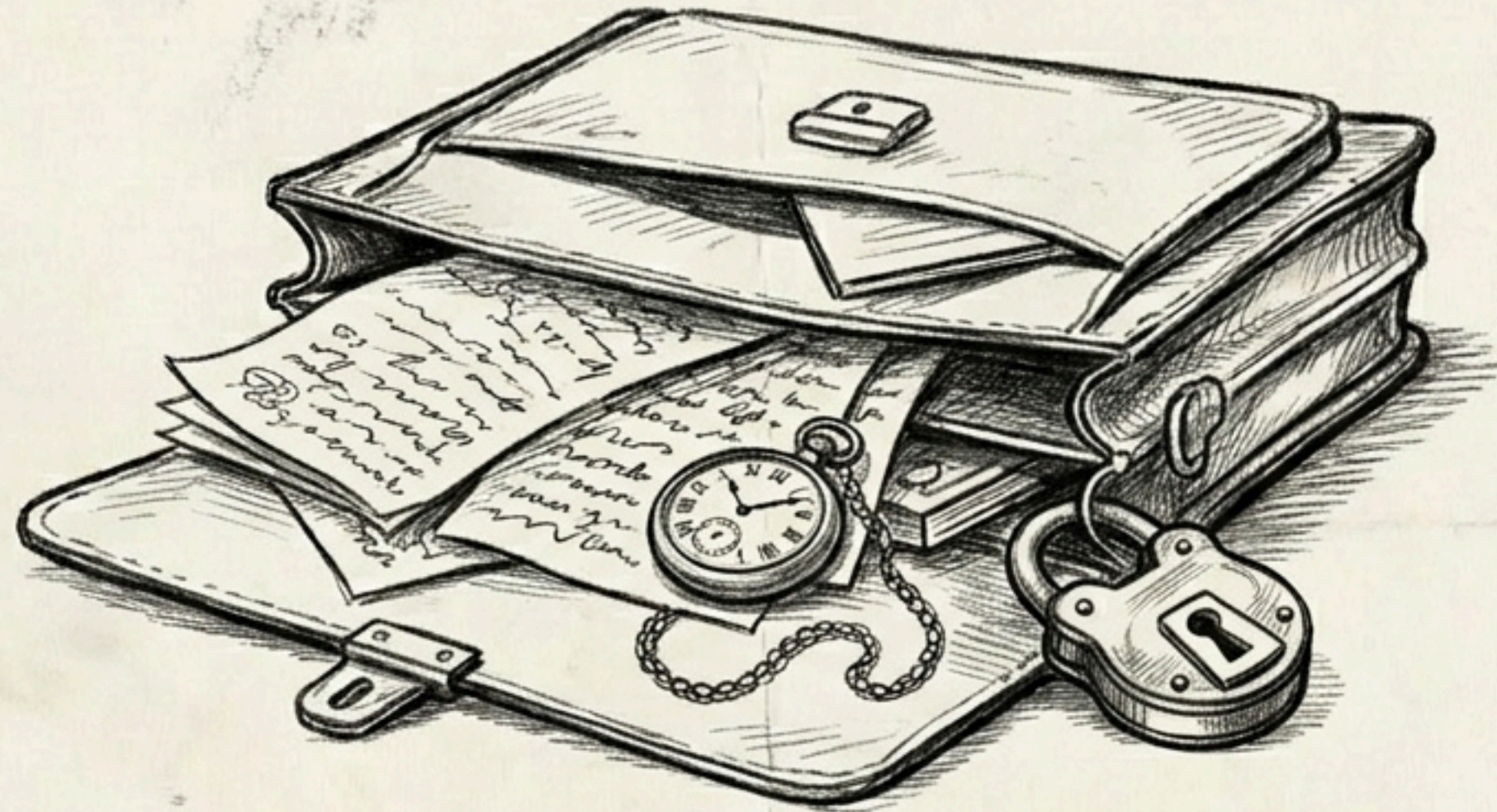
The Punishment: Total shunning. No talking, no texts, no family meals. Close relatives must completely cut contact unless living in the exact same house.

The Contrast: The Watchtower frames this as "loving discipline" to save the sinner. Former members describe it as severe psychological control and **total social isolation.**

The Architecture of High Control



Beyond the Smile at the Door



What appears to be a simple, polite door-to-door ministry is, in reality, a deeply complex, highly structured, and strictly controlled way of life. For Jehovah's Witnesses, faith is not just a Sunday practice—it is an all-encompassing world.

End of Field Notes.